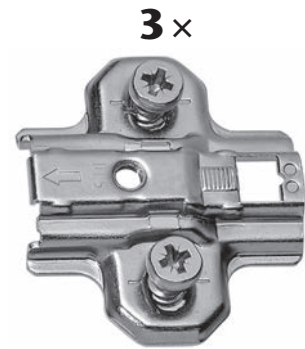


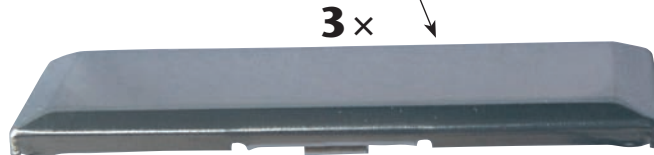
3x

BESC. 399



3x

BESC. 397



3x



2x

BESC. 624



2x

SCHR. 350  
6,3x13 mm



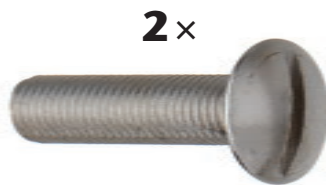
12x

SCHR. 348  
6,3x24 mm



2x

BESC. 625



2x

SCHR. 349  
M6x30 mm



3x

BESC. 492  
6 mm



2x

BESC. 423  
8 mm



1x

BESC. 626



4x

BESC. 438  
8x35 mm



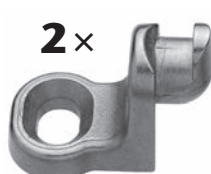
5x

SCHR. 415  
5x50 mm



2x

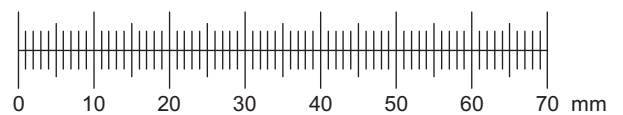
SCHR. 300  
5,5x13 mm

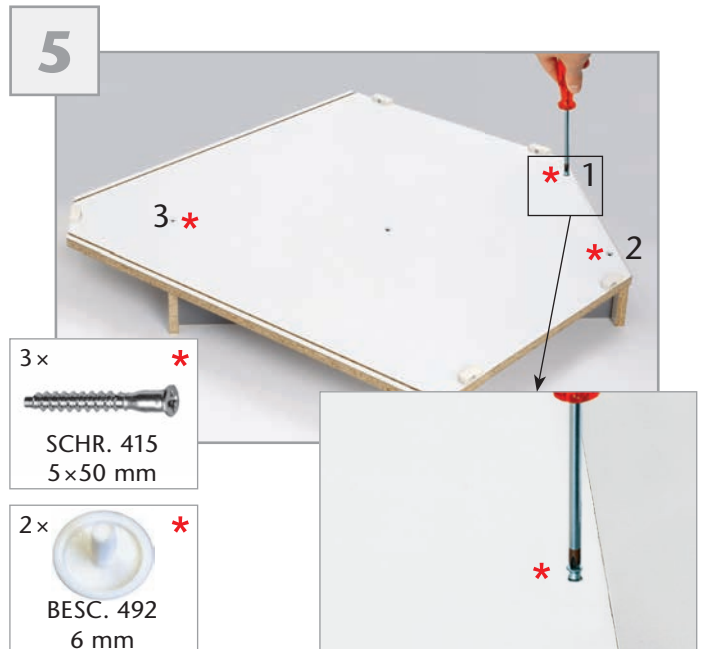
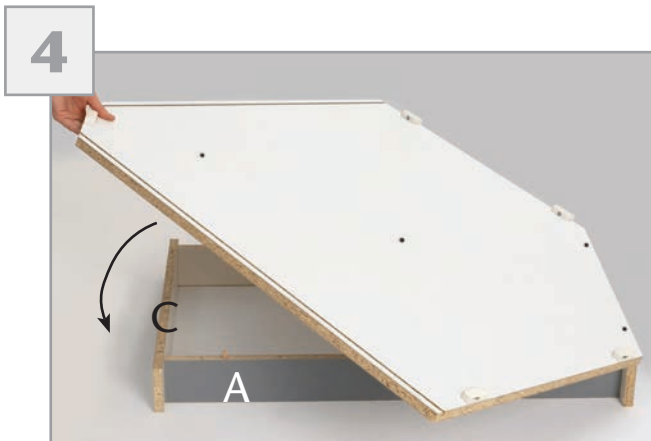
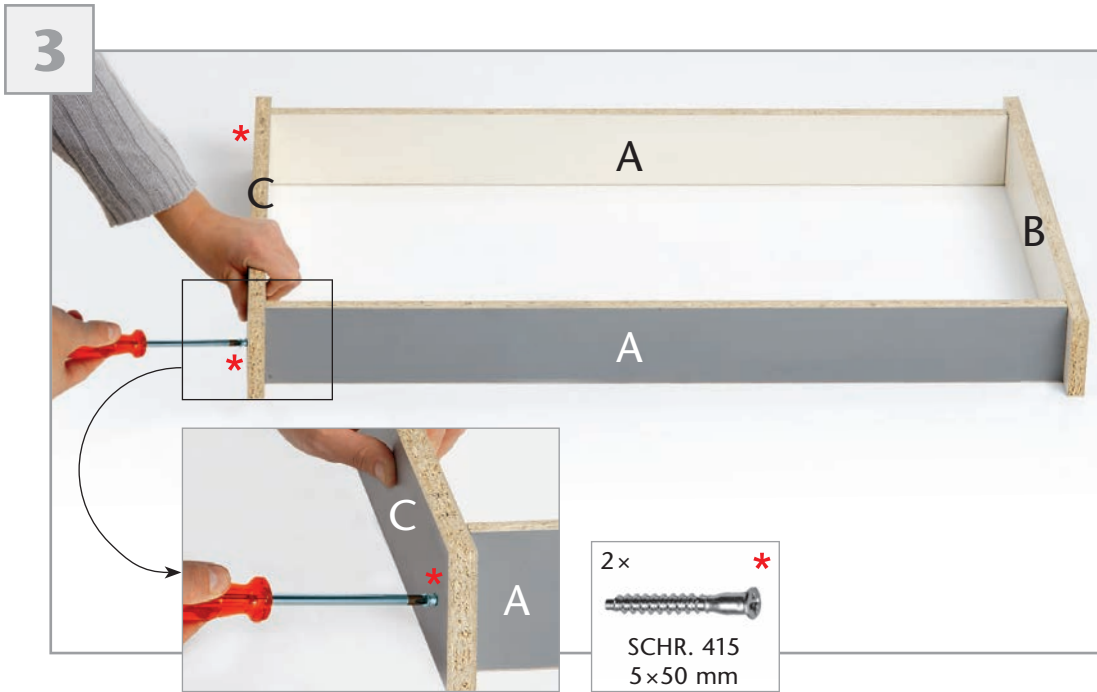
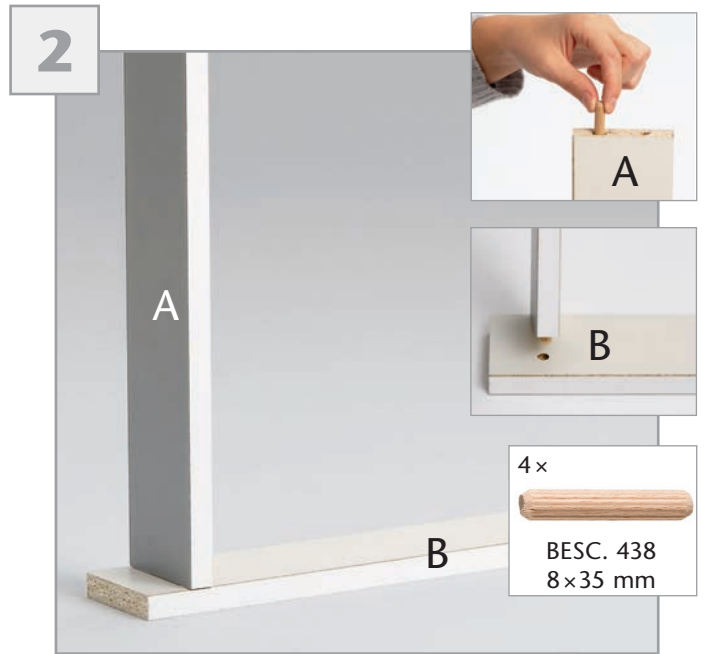
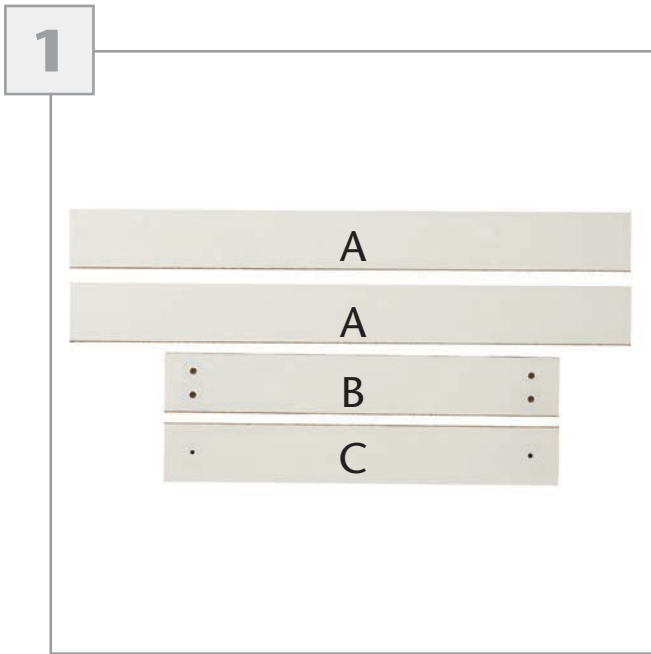


2x

BESC. 422

M: 1:1







2x  
   
 SCHR. 300  
 5,5x13 mm    BESC. 422



1x  
   
 BESC. 624    SCHR. 350  
                   6,3x13 mm





10



11



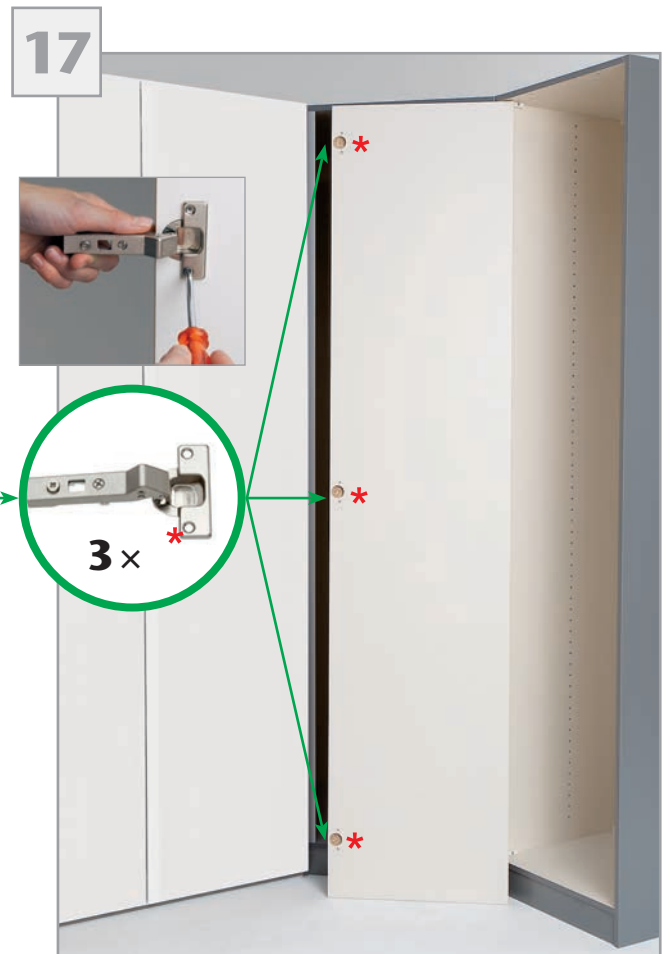
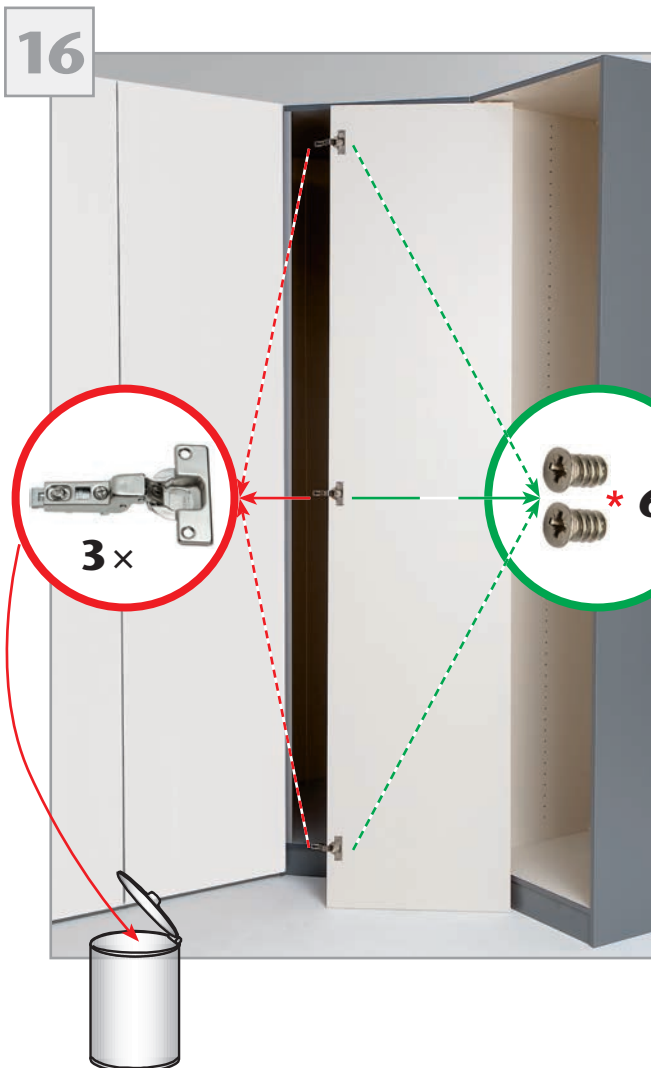
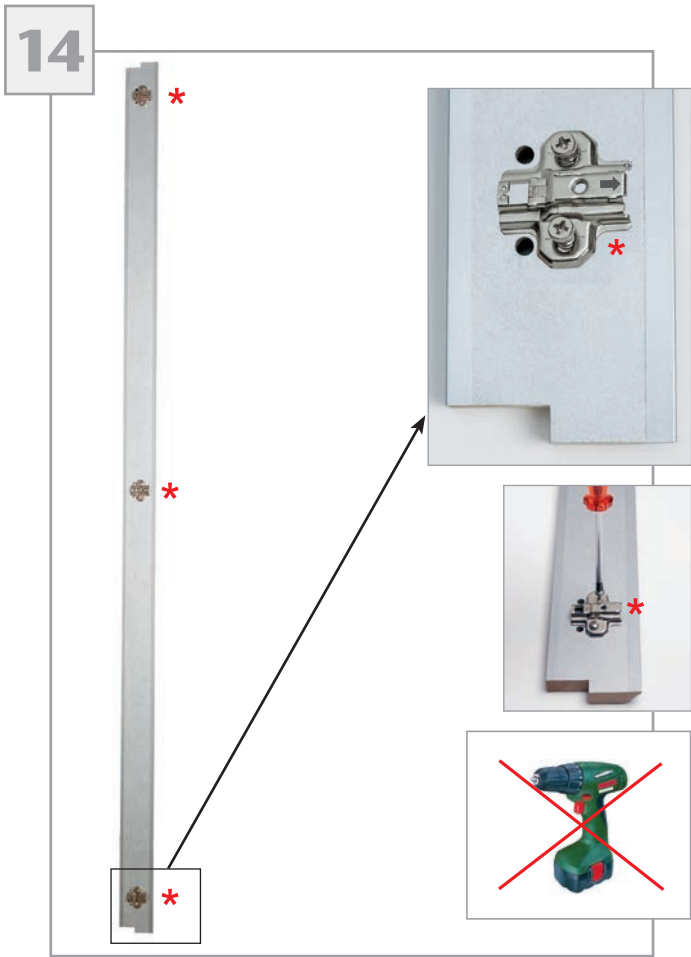
1x  
  
 SCHR. 350  
 6,3x13mm    BES-C. 624

12

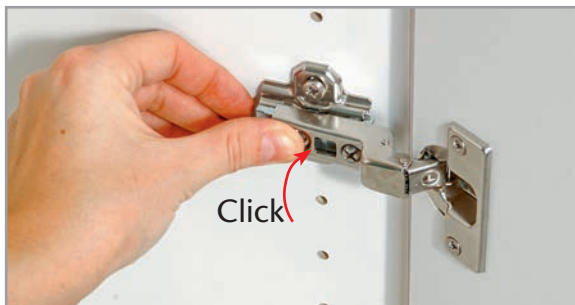


13

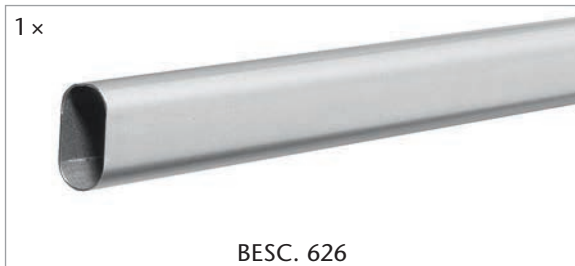
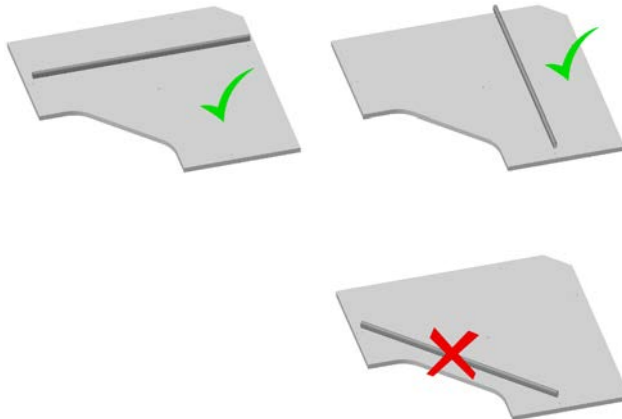




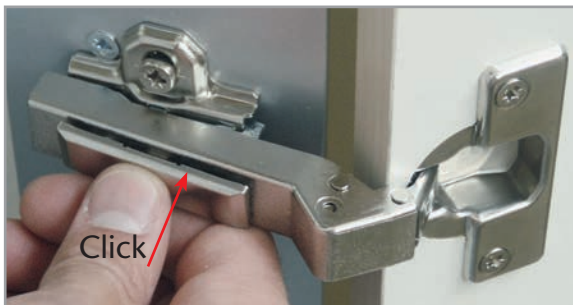
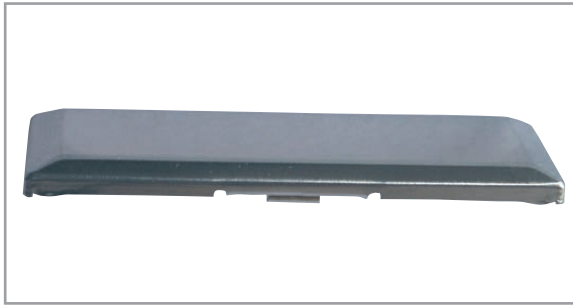
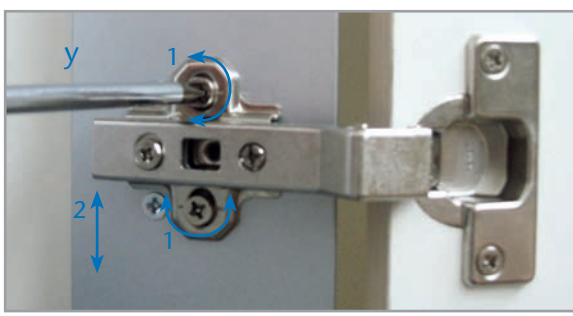
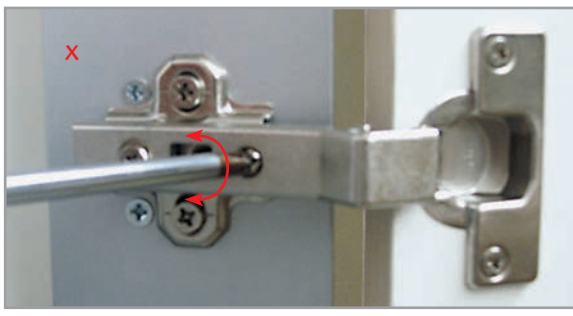
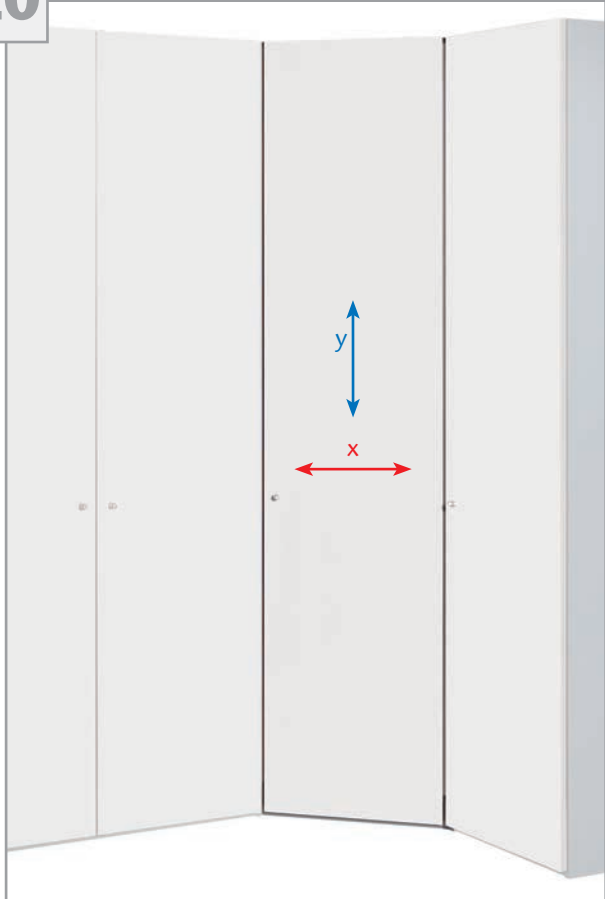
18

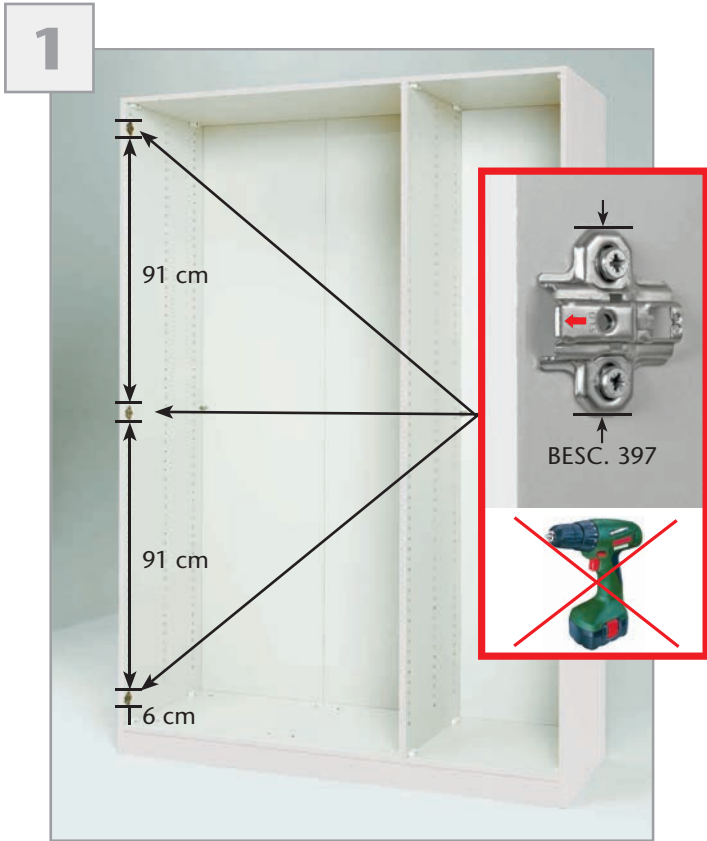


19









4

